

Whitlocks



56, Talveneth

Pendeen TR19 7UT

Offers in excess of £99,950



Modern purpose-built first floor flat enjoying a rural aspect and taking advantage of the afternoon sun and situated off the main roads within a short walk of the village centre.

Features of the property include double glazed uPVC windows, double bedroom, modern bathroom, open plan living room with fitted kitchen area and an allocated car parking space. EPC - C



BEDROOM 11'6" x 9'3" (3.51 x 2.82m)

with a wide window taking advantage of the afternoon sun and providing a pleasant rural aspect, built-in double wardrobe.

BATHROOM

with a modern sage coloured suite comprising a panelled bath with independent shower over, pedestal wash basin and low level w.c. suite. Part-tiled walls, extractor fan.

OPEN PLAN LIVING ROOM/KITCHEN

with a wide window taking advantage of the afternoon sun and providing a pleasant rural aspect, breakfast bar style room divider to:-

LIVING ROOM AREA 13'1" x 10'9" (3.99 x 3.28m)

KITCHEN AREA 9'6" x 8'4" (2.90 x 2.55m)

with fitted wall cupboards and built-in kitchen cabinets with worktops incorporating a stainless steel sink unit. Plumbing for washing machine.

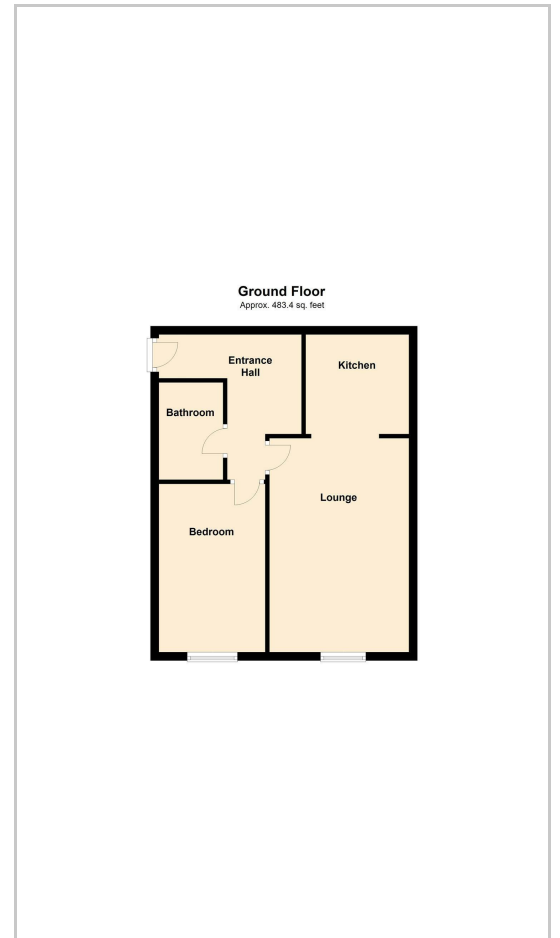
OUTSIDE

ALLOCATED CAR PARKING SPACE

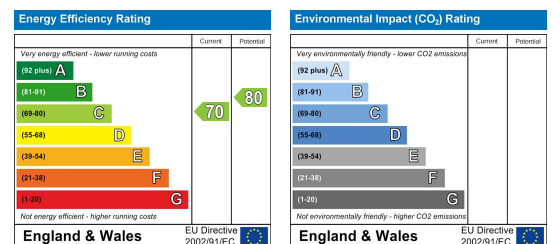
Area Map



Floor Plans



Energy Efficiency Graph



These particulars, whilst believed to be accurate are set out as a general outline only for guidance and do not constitute any part of an offer or contract. Intending purchasers should not rely on them as statements of representation of fact, but must satisfy themselves by inspection or otherwise as to their accuracy. No person in this firm's employment has the authority to make or give any representation or warranty in respect of the property.

48 Causewayhead, Penzance, Cornwall, TR18 2SS

Tel: 01736 369296 Email: sales@whitlockspenzance.co.uk whitlockspenzance.co.uk